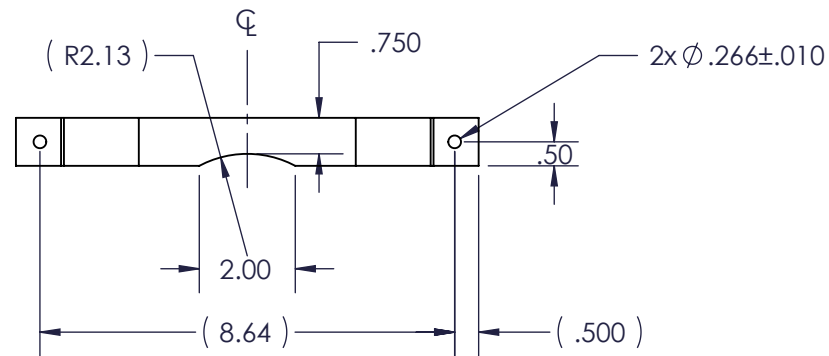
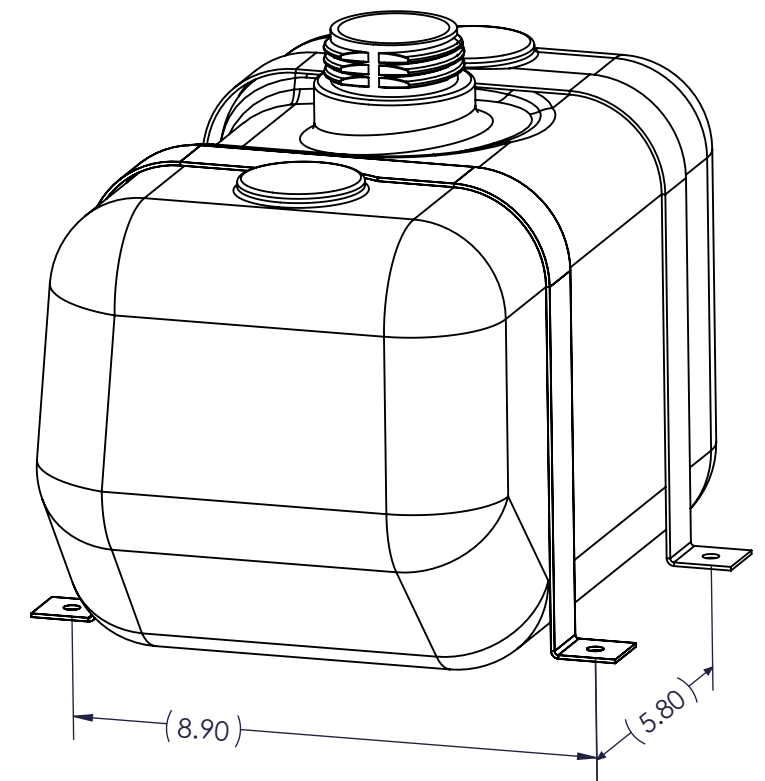


STRAP SHOWN IN THE FLAT FOR REFERENCE ONLY

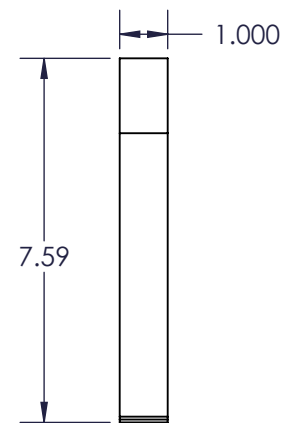
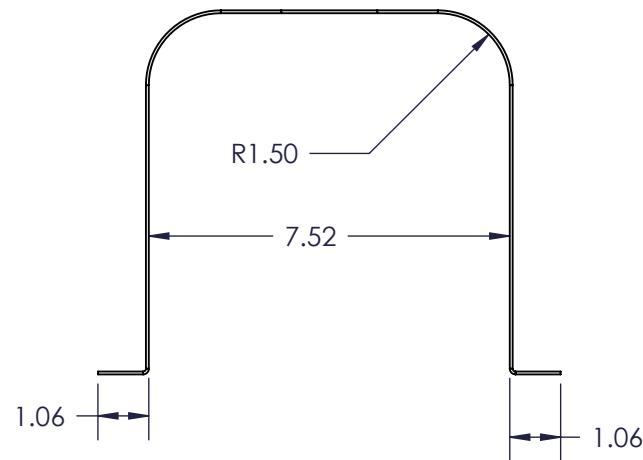


Notes

1. Material: 16 GA Cold Rolled Steel
2. Coating: Corrosion Resistant Black Polyester Powder Coating
3. No sharp edges.



Mounting Hole Pattern



REV	ECR	DESCRIPTION	DATE	BY	APR
B	---	Added mounting hole pattern.	10-24-11	RDL	CJG
A	NPN	Released for Production	8-11-11	RDL	CJG
REVISIONS					

PROPRIETARY AND CONFIDENTIAL
 THE INFORMATION CONTAINED IN THIS DRAWING IS THE SOLE PROPERTY OF FLAMBEAU, INC. ANY REPRODUCTION IN PART OR AS A WHOLE WITHOUT THE WRITTEN PERMISSION OF FLAMBEAU, INC. IS PROHIBITED.

DIMENSIONS ARE IN INCHES.
 TOLERANCES:
 ANGULAR: ±3°
 TWO PLACE DECIMAL ±.125"
 THREE PLACE DECIMAL ±.060"
 DIMENSIONS IN PARENTHESIS () ARE FOR REFERENCE ONLY.

SHT 1	FLAMBEAU, INC. 911 LYNN AVENUE BARABOO, WI 53913 PH.(608)356-5551		
	Scale: 1:4	BFI No: NA	Drawn By: RDL Date: 5-26-11
OF 1	Mold No: NA	Mat'l: See Notes	FPN: 468913A
	Description: Strap, 2.5 Gallon Tank		Customer: Flambeau Fluid Systems Dwg No: 468913